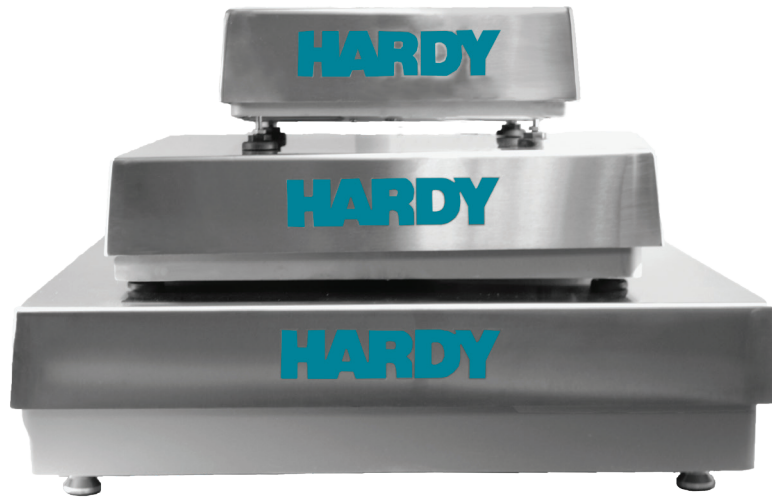


# Hardy Bench Scales

## Applications

### PROCESS WEIGHING

- Minor Ingredients or Hand-Add applications
- Small Batch Reactor Applications in Chemical/Biochemical
- Machine Filling and Dispensing
- Conveyor Scales
- Product Inspection: Checkweighing,
- Piece Count, Portion Control
- Shipping



## Features THE HARDY PROCESS TOOLBOX

The Hardy Process Toolbox is a set of productivity tools that delivers value across process weighing functions. Each tool saves time, increases accuracy, improves efficiency or reduces risk in your process weighing applications.



### Electronic calibration without test weights



### HARDY Load Sensors

- Stainless Steel or Aluminum
- True Hermetic Seal or Potted
- Corner adjusted

### Capacities from 5 lbs to 1,000 lbs

### Hazardous: FM IS, Class 1, Div 1

### NTEP Certification

### Overload Protection

- **300% R.O.\* Overload**
- **100% R.O. End Loading**
- **100% R.O. Corner Loading**

(\*Rated Output)

Hardy Bench Scales offer the ultimate in product configurability and customization for use in all industrial weighing applications, offering customers the ability to choose the right product at a price that fits their budget. Hardy Bench Scales are available in either stainless or carbon steel base construction, with 304 Stainless Steel platters. Choose between hermetically sealed, IP68/69K, C2 load cells and environmentally sealed, IP67 load cells, depending on your application.

All Hardy Bench Scales come standard in 12"x12", 18"x18", and 24"x24" sizes, and range in capacity from 5lbs – 1,000lbs (2.27kg to 454 kg). Custom sizes and capacities are available upon request. Tell us what will work best for your application and budget, and let us create the solution.

### 400 Series – HIBS400-xxxx

The 400 Series is Hardy's top of the line industrial bench scale. With all stainless steel construction and a hermetically sealed, IP68/IP69K, FM Hazardous approved, stainless steel Advantage® load cell, the HI BS400 is built for the heaviest wash down applications and corrosive environments. Hardy has built its C2 weight-free calibration technology into every scale, delivering the lowest total cost of ownership on the market. C2 calibration saves time during commissioning and replacement, removes personnel from processing areas, and keeps your process cleaner by eliminating the need for potentially contaminated test weights.

### 300 Series – HIBS300-xxxx

The Hardy 300 Series is a Hardy's lowest cost stainless steel industrial scale, built to handle light wash down and humid environments. Each bench scale is equipped with an FM approved IP67 aluminum load cell, and comes with NTEP certification standard.

### 200 Series – HIBS200-xxxx

The 200 Series is Hardy's lowest cost industrial scale, featuring a painted carbon steel base and IP67 aluminum load cell made for use in dry and dusty environments. Each aluminum load cell is FM approved, and the HI BS200 comes with NTEP certification standard.

For seamless integration into your manufacturing control system, attach any of the Hardy Bench Scales to a Hardy Weight Processor or Weight Controller with EtherNet/IP, Profibus-DP, Modbus, or Analog 4-20mA output. Or connect to a Hardy PAC or PLC plug-in weight module for the cleanest installation on the market.

All Hardy Scales can be paired with an optional 12" or 24" Indicator Column for instrument mounting. Hardy Bench Scales are also available with a ball-top platter to streamline roll-on, roll-off weighing applications.



## COMPONENTS TO COMPLETE YOUR HARDY SYSTEM

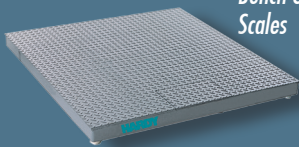
### Hardy Bench Scales, Floor Scales and Load Points

Hardy carries a wide variety of strain gauge load points and scale mounts to accommodate your application requirements.

ADVANTAGE Series with C2 Calibration



Bench & Floor Scales



### Weighing Instruments Dedicated to Your Applications

Controllers, Weigh Modules, Weight Processors & Transmitters

Allen-Bradley® Compatible Plug-in Weigh Scale Modules



HI 3000 & HI 4000 Controllers and HI 6000 Series Weight Processors



## SPECIFICATIONS

### Platter Construction

- 304 Stainless Steel (all models)
- Size: 12" x 12", 18" x 18" and 24" x 24" (custom sizes are available)

### Deck Height

- 12" x 12": 5, 25, 50, 150 lbs: 3.75" to 4.5" (9.5 to 11.4 cm) adjustable
- 18" x 18": 50, 25, 50, 150 lbs: 3.75" to 4.5" (9.5 to 11.4 cm) adjustable
- 18 x 18": 300, 500 lbs: 5.5" x 6.5" (14 to 16.5 cm) adjustable
- 24" x 24": all capacities 5.5" x 6.5" (14 to 16.5 cm) adjustable

### Capacity Range

- 5 lbs to 1000 lbs (2.27 to 454 kg)

### Rated Output

- Overload: 300% R.O.
- End loading: 100% R.O.
- Corner loading: 100% R.O.

### Cable Length

- Platform to Instrument - 9 to 10 feet nominal (3 meters) (for longer cable lengths, contact the Factory)

### Base Construction

- HIBS400 & HIBS300: Stainless Steel
- HIBS200: Painted Carbon Steel

### Load Sensors

- HIBS400: C2® stainless steel, hermetically sealed IP68/IP69K
- HIBS300 & HIBS200: aluminum, environmentally potted, IP67

### Resolution

- 5000 divisions of scale capacity

### Accuracy

- Combined Error: 0.02%

### Warranty

- Two year limited warranty

### Approvals

- NTEP (HIBS300 and HIBS200 Only)
- FM IS Hazardous Class I, Div 1 Load Cell

### Shipping Weight

- 12" x 12": 38 lbs (17.2 kg)
- 18" x 18": 59 lbs (26.8 kg)
- 24" x 24": 104 lbs (47.2 kg)

## Hardy Bench Scale Models

### HI BS400

Purpose built to handle the toughest industrial applications, ensuring a long life when used in harsh, corrosive, wet or humid environments (IP68/IP69K). 304SS base and platter with stainless steel, hermetically sealed, C2 load cell. FM certified.

### HI BS300

Rugged industrial scale with stainless steel construction for use in harsh and wet environments (IP67). 304SS base and platter construction with an Aluminum Load Cell. FM certified, NTEP pending.

### HI BS200

A versatile and cost-effective industrial scale that satisfies a variety of weighing applications in dry environments (IP67). Carbon steel base and 304SS Platter, with an Aluminum Load Cell. FM certified, NTEP Pending.

## Standard Sizes and Capacities

	lbs	lbs	lbs	lbs	lbs	lbs	lbs
Capacity	5	25	50	150	300	500	1000
12" x 12"	X	X	X	X			
18" x 18"			X	X	X	X	
24" x 24"			X	X	X	X	X

## Hardy Bench Scale Accessories

Enables you to easily configure a solution to meet your individual applications!

- Instrument pedestal
- Roll Top



Instrument Pedestal  
12" and 24"



Roll Top

Stainless and Carbon Steel

# HARDY

## PROCESS SOLUTIONS

Measurement • Automation • Productivity

### Hardy Process Solutions

9440 Carroll Park Dr.  
San Diego, CA 92121  
tel. +1-858-278-2900  
tel. 800-821-5831  
fax +1-858-278-6700  
www.hardysolutions.com  
hardyinfo@hardysolutions.com

ISO 9001:2008  
CERTIFIED  
Since 1993

### Visit our website for:

- full product specifications
- ordering information
- application notes
- technical description
- operator's manual

[www.hardysolutions.com](http://www.hardysolutions.com)  
or call us: 800-821-5831  
+1-858-278-2900

All information within is subject to change without notice. C2, INTEGRATED TECHNICIAN and ADVANTAGE are registered trademarks of Hardy Process Solutions, Inc. Allen-Bradley, CompactLogix, MicroLogix and Encompass are trademarks of Rockwell Automation, Inc. All other trademarks or registered trademarks are the property of their respective owners.

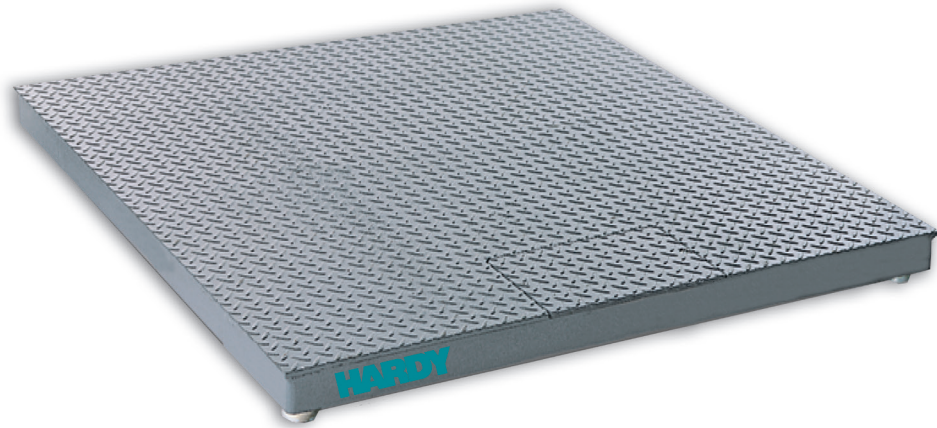
HAR BEN 0115  
0400-0029-01A

# Hardy Floor Scales

## Applications

### PROCESS WEIGHING

- Inventory Management
- Batching & Blending
- Dispensing & Filling
- Check Weighing
- Shipping



## Features THE HARDY PROCESS TOOLBOX

The Hardy Process Toolbox is a set of productivity tools that delivers value across process weighing functions. Each tool saves time, increases accuracy, improves efficiency or reduces risk in your process weighing applications.



**Electronic calibration without test weights**

**C2<sup>®</sup> eCAL<sup>™</sup>**

**Weighing system monitoring and troubleshooting**

**IT<sup>®</sup> INTEGRATED TECHNICIAN**

**HARDY ADVANTAGE<sup>®</sup> Load Sensors**

- Factory Matched
- Stainless Steel
- True Hermetic Seal
- No Cornering

**Capacities Range from 1,000 to 10,000 lbs**

**Top Access Summing Card**

**100% End Loading**

*Hardy's accurate, rugged and reliable floor scales provide value and flexibility in size and capacity for use in a wide range of industrial weighing applications. Rated for 250,000 load cycles under normal loading conditions,\* these floor scales are built to last.*

### FEATURES

Hardy floor scales are designed and built for harsh chemical and washdown industrial environments, yet are easy to use and install with the latest advancements in weighing technology. Just level the deck, attach the included twenty-foot cable, calibrate (if a C2<sup>®</sup> compatible instrument, set your reference), verify and begin weighing.

Available in eight sizes from 30 x 30 inch to 72 x 96 inches in 1, 2.5, 5, and 10 thousand pound capacities, Hardy floor scales have two threaded holes in the decks for attaching eyebolts to facilitate installation and cleaning.

### C2<sup>®</sup> ELECTRONIC CALIBRATION

Used with a Hardy weight processor or controller, C2 enables fast, accurate, electronic calibration without test weights. The C2 system reduces downtime for installation or repairs and eliminates test weight related injuries.

### INTEGRATED TECHNICIAN<sup>®</sup>

Each scale has built-in INTEGRATED TECHNICIAN (IT) circuitry. Coupled with a Hardy controller or instrument, the scale provides diagnostic and troubleshooting tools that read individual weights and voltages to aid you in isolating problems and ensure the integrity of your scale system.

### SERVICE BY DESIGN

Along with C2 and INTEGRATED TECHNICIAN, all Hardy floor scales feature a top access plate for quick and easy access to the NEMA 4X summing box containing the Hardy 6011 Summing Card, ensuring that general maintenance is easier and more time-efficient.

### HERMETICALLY SEALED LOAD SENSORS

The heart of any scale is the load sensors. All Hardy floor scales come standard with four matched Hardy ADVANTAGE<sup>®</sup> stainless steel, true hermetically-sealed sensors — sealed at both the gauging area and cable entry for long life. All are matched and calibrated for mV/V and mV/V/ohm. This eliminates the need for corner adjustment and potentiometers in the junction box, allowing a sensor to be replaced without calibration. Instead of the typical threaded hole into which the load cell foot is attached, the ADVANTAGE sensors use a blind hole technique ensuring the load is applied at a precise location to provide an accurate reading, weight after weighing.

### RUGGED, LOW PROFILE DESIGN

With a deck height of only 4.0 inches and 100% end loading, these floor scales enable easy, any-side access and maneuvering of all types of load handling equipment onto the scale.

Each scale features a field-proven, rugged structural rib design with 1/4 inch thick smooth or diamond plate deck that can withstand overloads of up to 100% of its capacity. Durable rubber encapsulated feet provide easy height adjustment.

*\*Contact Hardy for more information*



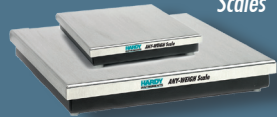
## COMPONENTS TO COMPLETE YOUR HARDY SYSTEM

### Hardy Bench Scales, Floor Scales and Load Points

Hardy carries a wide variety of strain gauge load points and scale mounts to accommodate your application requirements.



ADVANTAGE Series with C2 Calibration



Bench & Floor Scales

### Weighing Instruments Dedicated to Your Applications

Controllers, Weigh Modules, Weight Processors & Transmitters

Allen-Bradley® Compatible Plug-in Weigh Scale Modules



HI 3000 & HI 4000 Controllers and HI 6000 Series Weight Processors



## SPECIFICATIONS

### Platform

- 0.25" inch thick smooth or safety tread deck

### Deck Height

- 4.0 inches (10.2 cm) (adjustable 0.2" or 5 mm)

### Overload Capacity

- 200% of rated scale capacity

### End Loading

- 100% of rated scale capacity

### Cable Length

- Platform to Instrument - 20 feet (for longer cable lengths, contact the Factory)

### Construction

- 304 SS Stainless Steel
- Painted Carbon Steel with Two-part UV resistant Polyurethane - 2 to 4 mil top coat

### Load Sensors

- C2® stainless steel
- hermetic seal
- blind hole loading

### Junction Box

- NEMA 4X

### Hardy 6011 Summing Card

- 4 Individual load sensor terminal blocks
- INTEGRATED TECHNICIAN® circuitry

### Scale Excitation

- 5vdc +/-5%

### Optional Eye Bolts

- 1/2 - 13 x 1-1/2", 2-1/4" diameter eye

### Duty Cycle

- +250,000 load cycles under normal loading conditions\*

\*Contact Hardy for further information

### Accuracy

- Combined Error: 0.02%
- Repeatability: 0.01%

### Warranty

- Two year limited warranty

### Approvals PENDING

- NTEP
- UL, CUL, CE
- FM Hazardous Class I,II,III/Div 2

## ORDERING OPTIONS

- PS Painted Steel Platform Top
- SS Stainless Steel Platform Top
- S Smooth Platform Top
- T Tread Plate Platform Top

### Visit our website for:

- full product specifications
- ordering information
- application notes
- technical description
- operator's manual

**www.hardysolutions.com**  
or call us: **800-821-5831**  
**+1-858-278-2900**

## STANDARD SIZES AND CAPACITIES

SIZE feet/cm	CAPACITY lb/kg	HEIGHT in/cm	SHIP WEIGHT lb/kg
30" x 30" / 76 x 76	1000/500	3.375"/8.6 cm	200/91
3' x 3' / 91 x 91	1000/500	3.375"/8.6 cm	250/113
	2500/1250	3.375"/8.6 cm	250/113
4' x 4' / 122 x 122	2500/1250	3.375"/8.6 cm	405/184
	5000/2250	3.375"/8.6 cm	405/184
4' x 5' / 122 x 152	5000/2250	3.375"/8.6 cm	500/227
	10,000/4500	3.375"/8.6 cm	405/184
4' x 6' / 122 x 183	5000/2250	3.375"/8.6 cm	600/272
	10,000/4500	3.375"/8.6 cm	600/272
5' x 5' / 152 x 152	5000/2250	3.375"/8.6 cm	650/295
	10,000/4500	3.375"/8.6 cm	650/295
5' x 7' / 152 x 213	5000/2250	3.375"/8.6 cm	900/408
	10,000/4500	3.375"/8.6 cm	900/408
6' x 8' / 183 x 244	10,000/4500	3.375"/8.6 cm	1150/522

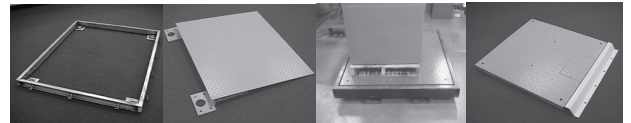
## HARDY FLOORSCALE ACCESSORIES

Enables you to easily configure a solution to meet your individual applications!

- Ramps
- Pit Frames
- Bumper Guards
- Bolt Down Plates
- Instrument pedestal
- Portability Frames



Instrument Pedestal  
HIFSI-48-SS



Pit Frames  
HIFSPF Series

Access Ramps  
HIFSR Series

Portability Frames  
HIFSPK Series

Bumper Guards  
HIFSBG Series

Lift Deck Scales Coming Soon!

# HARDY

## PROCESS SOLUTIONS

Measurement • Automation • Productivity

### Hardy Process Solutions

9440 Carroll Park Dr.  
San Diego, CA 92121  
tel. +1-858-278-2900  
tel. 800-821-5831  
fax +1-858-278-6700  
www.hardysolutions.com  
hardyinfo@hardysolutions.com

**ISO 9001:2008**  
CERTIFIED  
Since 1993

All information within is subject to change without notice. C2, INTEGRATED TECHNICIAN and ADVANTAGE are registered trademarks of Hardy Process Solutions, Inc. Allen-Bradley, CompactLogix, MicroLogix and Encompass are trademarks of Rockwell Automation, Inc. All other trademarks or registered trademarks are the property of their respective owners.

HAR FLR 0714  
0400-0024-01A

**www.hardysolutions.com • 800.821.5831**

# ANY-WEIGH BENCH SCALES



## ANY-WEIGH® Bench Scales



### UNIVERSAL SCALE SPECIFICATIONS

Rated Output (ES)	0.900 ± 0.0009 mV/V
Combined Error	0.030 % R.O.
Zero Balance	5.0 % R.O.
Creep @ 30 Min.	0.030 % R.O.
Temp Effect Output	< ± 0.0015 % R.O./°F
Temp Effect Sensitivity	< ± 0.0008 % R.O./°F
Comp. Temp Range	-10 - +40°C
Oper. Temp Range	-10 - +65°C
Input Resistance	297.5 ± 10% ohm
Output Resistance	250 ± 5% ohm
Excitation	5 - 15 Volts
Safe Load Limit	300 % Emax
Ultimate Load	400 % Emax
Max Cornering Error	0.06% 1/2 full scale load, 1/2 way to corner
Warranty	Two years

The ANY-WEIGH® Bench scales provide complete flexibility in size and capacity for use in a wide range of weighing applications. With their rugged construction and stainless steel tops, ANY-WEIGH Scales are a great fit for both laboratory and industrial installations.

The ANY-WEIGH line of bench scales can be configured with standard interfacing to a weight instrument or with a built-in, direct connection to a PLC or PC.

#### Universal Scale - HI xxxxSBU-x\*

Directly attach the scale's 15-foot cable to any weighing instrument or controller. If interfacing with a Hardy Controller, you can take full advantage of WAVERSAVER®, and C2® Electronic Calibration.

#### DeviceNet Scale - HI xxxxSBD-x\*

With its built-in DeviceNet interface you can use this scale to provide a weight output to any point on a DeviceNet Network. This version also incorporates both the WAVERSAVER and C2 technologies, and comes with a six-inch pig-tailed connector.

#### Analog Scale - HI xxxxSBA-x\*

Use the Analog Output Scale to provide a 4-20 mA output directly proportional to the weight reading. This version offers a low-cost, effective solution for bringing an analog weight reading directly into a control system, with minimal additional wiring or hardware, and comes with a 15-foot 2-wire shielded cable. The scale comes pre-wired and pre-calibrated from the factory but provides potentiometers for coarse and fine zero adjustment as well as span. It does not have C2 or WAVERSAVER capabilities.

### ORDERING INFORMATION

MODEL #	SIZE	CAPACITY	HEIGHT	SHIP WEIGHT
	in/mm	lb/kg	in/mm	lb/kg
HI 1212SB_-33	12" x 12" / 298 x 298	33/15	1.54/39.1	14/6.4
HI 1212SB_-66	12" x 12" / 298 x 298	66/30	1.56/39.6	14/6.4
HI 1212SB_-130	12" x 12" / 298 x 298	130/60	1.62/41.2	14/6.4
HI 2424SB_-130	24" x 24" / 600 x 600	130/60	1.62/41.2	52/23.6
HI 2424SB_-330	24" x 24" / 600 x 600	330/150	1.65/41.9	52/23.6
HI 2424SB_-660	24" x 24" / 600 x 600	660/300	1.87/47.5	52/23.6
HI 2424SB_-1.3K	24" x 24" / 600 x 600	1300/590	2.05/52.1	52/23.6

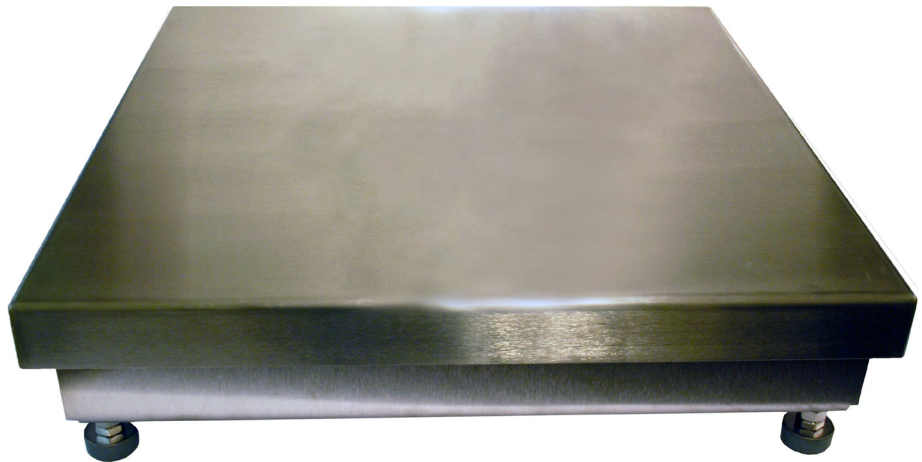
SBU Universal      SBD DeviceNet  
SBA Analog        SBAFM Analog Hazardous

# Hardy Enviro™ Bench Scales

## Applications

### PROCESS WEIGHING

- *Minor Ingredients or Hand-Add applications*
- *Small Batch Reactor Applications in Chemical/Biochemical*
- *Product Inspection: Checkweighing,*
- *Piece Count, Portion Control*
- *Shipping*



## Features

### Sanitary Washdown

- *304 Stainless Steel base and platter*
- *IP67 Rated Load Cell*
- *Closed corners on platform cover*
- *Withstands high pressure and high temperatures*

### HARDY Load Sensor

- *Stainless Steel*
- *Corner adjusted*

### Capacities from 2 lbs to 100 lbs

### Sizes from 10" x 10" to 18" x 18"

### NTEP Certification

### Overload Protection

- **300% R.O.\* Overload**
- **100% R.O. End Loading**
- **100% R.O. Corner Loading**

(\*Rated Output)

*The Hardy Process Solutions Enviro™ bench scale meets the needs of the food and chemical industries for sanitary scales that withstand high-pressure, high-temperature washdown environments.*

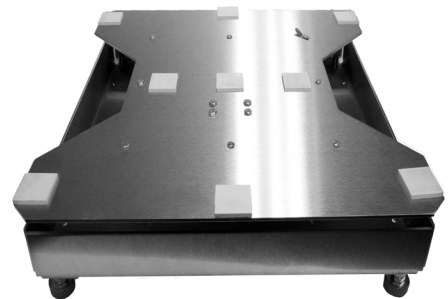
All Hardy Enviro Scales come standard in 10"x10", 12"x12" and 18"x18" and range in capacity from 2 lbs – 100 lbs (0.90 kg to 45.4 kg).

Made of 304 stainless steel and featuring an IP67 rated load cell, the Enviro washdown bench scales are designed for easy cleaning and sanitizing. Welds are continuous, which prevents processing materials and moisture from accumulating and forming colonization points for harmful bacteria like Salmonella, E. Coli, and Listeria Monodytogenes.

Closed corners on the platform cover prevent splash collection of water or processing materials inside the scale. Busing and spacers are used to eliminate lap joints and facilitate quick and easy cleaning.

The ultra-smooth stainless platter resists surface penetration and is easy to clean, adhering to the AMI's strict standards for safety in RTE areas and other production applications. The superior sanitary design and durable stainless steel construction of the Enviro™ washdown bench scales are a perfect foundation for a reliable sanitary bench scale configuration.

At Hardy, we believe that industrial weighing systems should be EASY to engineer and to operate. Simplicity drives the LEAST TOTAL COST. Want MORE PRODUCTIVITY at the LEAST TOTAL COST to own? Call Hardy to discover how today!





## COMPONENTS TO COMPLETE YOUR HARDY SYSTEM

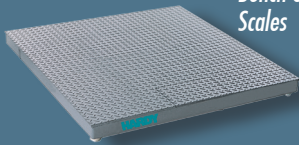
### Hardy Floor Scales and Load Points

Hardy carries a wide variety of strain gauge load points and scale mounts to accommodate your application requirements.

*ADVANTAGE Series with C2 Calibration*



*Bench & Floor Scales*



### Weighing Instruments Dedicated to Your Applications

Controllers, Weigh Modules, Weight Processors & Transmitters

*Allen-Bradley® Compatible Plug-in Weigh Scale Modules*



*HI 3000 & HI 4000 Controllers and HI 6000 Series Weight Processors*



## Hardy Enviro Bench Scale

### Specifications

#### IP Rating:

- IP67

#### Load Cell Type:

- Stainless Steel, Potted

#### Base Construction:

- 304 Stainless Steel

#### Platter Construction:

- 304 Stainless Steel

#### Capacity Range:

- 2lb to 100lb

#### Minimum Overload Protection:

- 300% Rated Capacity

#### Minimum End Loading Protection:

- 100% Rated Capacity

#### Minimum Corner Loading Protection:

- 100% Rated Capacity

#### Intrinsically Safe:

- Yes

#### Legal for Trade Rating:

- NTEP

#### Resolution:

- 5,000 divisions of full scale

#### Sanitary Specification:

- Follows sanitary specifications for processing equipment developed by the American Meat Institute (AMI)

#### Standard Sizes:

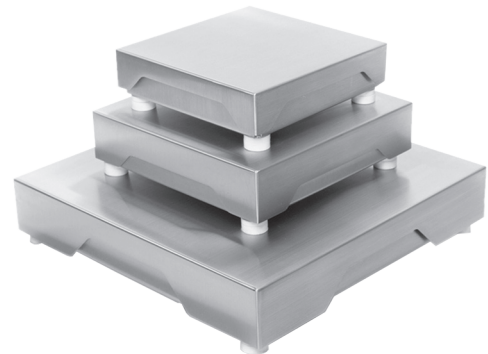
- 10" x 10" x 2.89" H
- 12" x 12" x 3.10" H
- 18" x 18" x 3.87" H

#### Shipping Weight

- 10" x 10": 25 lbs (11.34kg)
- 12" x 12": 38 lbs (17.2 kg)
- 18" x 18": 59 lbs (26.8 kg)

### Standard Sizes and Capacities

Model #	Platter Size	Capacity
HIWDPS-1010-0002	10" x 10"	2 lb
HIWDPS-1010-0006	10" x 10"	6 lb
HIWDPS-1010-0010	10" x 10"	10 lb
HIWDPS-1010-0025	10" x 10"	25 lb
HIWDPS-1212-0030	12" x 12"	30 lb
HIWDPS-1212-0050	12" x 12"	50 lb
HIWDPS-1818-0050	18" x 18"	50 lb
HIWDPS-1818-0100	18" x 18"	100 lb



**HARDY**  
**PROCESS SOLUTIONS**  
 Measurement • Automation • Productivity

### Hardy Process Solutions

9440 Carroll Park Dr.  
 San Diego, CA 92121  
 tel. +1-858-278-2900  
 tel. 800-821-5831  
 fax +1-858-278-6700  
 www.hardysolutions.com  
 hardyinfo@hardysolutions.com

**ISO 9001:2008**  
**CERTIFIED**  
 Since 1993

### Visit our website for:

- full product specifications
- ordering information
- application notes
- technical description
- operator's manual

**www.hardysolutions.com**  
 or call us: **800-821-5831**  
**+1-858-278-2900**

All information within is subject to change without notice. C2, INTEGRATED TECHNICIAN and ADVANTAGE are registered trademarks of Hardy Process Solutions, Inc.. Allen-Bradley, CompactLogix, MicroLogix and Encompass are trademarks of Rockwell Automation, Inc. All other trademarks or registered trademarks are the property of their respective owners.

ENVIROBEN1114  
 0400-0036-01B

**www.hardysolutions.com • 800.821.5831**

# Hardy Lift Deck Floor Scales

## Applications

### PROCESS WEIGHING

- Inventory Management
- Batching & Blending
- Dispensing & Filling
- Shipping



## Features THE HARDY PROCESS TOOLBOX

The Hardy Process Toolbox is a set of productivity tools that delivers value across process weighing functions. Each tool saves time, increases accuracy, improves efficiency or reduces risk in your process weighing applications.



**Electronic calibration without test weights**



**Weighing system monitoring and troubleshooting**



**Hardy ADVANTAGE® Load Sensors**

- Factory Matched IP69K
- Stainless Steel
- True Hermetic Seal

**Capacities Range from 1,000 to 5,000 lbs**

**Top Access Summing Card**

**100% End Loading**

Hardy Process Solutions now has a new line of lift-deck wash down scales to meet the needs of the most demanding, clean applications.

These process weighing scales combine best-in-class durability with Hardy's Process Toolbox features: weightless calibration (C2®) and operator diagnostics (INTEGRATED TECHNICIAN®). Hardy Lift Deck Floor Scales offer manufacturers multiple ways to reduce their maintenance costs and downtime.

### DESIGNED FOR ANY ENVIRONMENT

Hardy Lift Deck Floor Scales are designed and built for harsh chemical and washdown industrial environments, yet are easy to use and install with the latest advancements in weighing technology. Just level the deck, attach the included twenty-foot cable, calibrate (if a C2® compatible instrument, set your reference), verify and begin weighing.

Available in three sizes from 36 x 36 inch to 60 x 60 inch in 1, 2, and 5 thousand pound capacities. Hardy Lift Deck floor scales have two or four handles on the decks for easy lifting to facilitate installation and cleaning.

### C2® ELECTRONIC CALIBRATION

With a Hardy weight controller, C2® load sensors enable fast, accurate, electronic calibration without test weights at just a push of a button. The easy-to-use C2® system reduces downtime for installation and repairs and eliminates test weight related safety risks.

### INTEGRATED TECHNICIAN®

Each scale has built-in INTEGRATED TECHNICIAN® (IT) circuitry. When coupled with a Hardy controller, the scale provides diagnostic and troubleshooting tools that read individual weights and voltages to aid you in isolating problems. Together, Hardy C2® and IT eliminate the need to open the junction box, reducing the risk of moisture ingress. The junction box remains sealed reducing the risk of contamination for heavy wash down applications.

### HERMETICALLY SEALED LOAD SENSORS

The heart of any scale is the load sensors. All Hardy Lift Deck floor scales come standard with four matched Hardy ADVANTAGE® IP69K stainless steel, true hermetically-sealed sensors — sealed at both the gauging area and cable entry for long life. All are matched and calibrated for mV/V and mV/V/ohm. This eliminates the need for corner adjustment and potentiometers in the junction box, allowing a sensor to be replaced without calibration. Hardy ADVANTAGE® sensors use a blind hole technique ensuring the load is applied at a precise location to provide an accurate reading, weighment after weighment.

### RUGGED, LOW PROFILE DESIGN

Rated for 250,000+ load cycles under normal loading conditions,\* these lift deck floor scales are built to last. With a deck height of only 4.2 inches and 100% end loading, Hardy Lift Deck Floor Scales feature a hydraulic system that enables one person to easily lift the deck for cleaning. Durable rubber-based feet are height adjustable from below the platform for easy leveling.



## COMPONENTS TO COMPLETE YOUR HARDY SYSTEM:

### Hardy Bench Scales, Floor Scales and Load Points

Hardy carries a wide variety of strain gauge load points and scale mounts to accommodate your application requirements.



ADVANTAGE Series with C2 Calibration



Bench & Floor Scales

### Weighing Instruments Dedicated to Your Applications

Controllers, Weigh Modules, Weight Processors & Transmitters

Allen-Bradley® Compatible Plug-in Weigh Scale Modules



HI 3000 & HI 4000 Controllers and HI 6000 Series Weight Processors



## SPECIFICATIONS

### Platform

- 0.25 inch thick smooth or safety tread deck

### Height

- 4.2-4.4 inches (10.6 -11.2 cm) adjustable 0.2" or 5 mm

### Accuracy

- Combined Error: 0.02%
- Repeatability: 0.01%

### Overload Capacity

- 100% of rated scale capacity

### End Loading

- 100% of rated scale capacity

### Cable Length

- Platform to Instrument - 20 feet (for longer cable lengths, contact the Factory)

### Construction

- Stainless Steel - Type 304

### Duty Cycle

- +250,000 load cycles under normal loading conditions\*

\*Contact Hardy for further information

### Load Sensor

- IP69K rating for washdown applications
- C2® or manual calibration
- stainless steel
- hermetically sealed
- blind hole loading

### Summing Card Enclosure

- NEMA 4x stainless steel

### Hardy 6011 Summing Card

- Individual load sensor terminal blocks
- INTEGRATED TECHNICIAN® circuitry

### Scale Excitation

- 5vdc +/-5%

### Warranty

- Two Years

## STANDARD SIZES AND CAPACITIES

SIZE feet/cm	CAPACITY lb/kg	HEIGHT in/cm	SHIP WEIGHT lb/kg
3' x 3' / 91 x 91	1000/454	4"/10.2 cm	290/131.5
	2000/907	4"/10.2 cm	290/131.5
	5000/2268	4"/10.2 cm	290/131.5
4' x 4' / 122 x 122	1000/454	4"/10.2 cm	440/199.6
	2000/907	4"/10.2 cm	440/199.6
	5000/2268	4"/10.2 cm	440/199.6
5' x 5' / 152 x 152	1000/454	4"/10.2 cm	695/315.2
	2000/907	4"/10.2 cm	695/315.2
	5000/2268	4"/10.2 cm	695/315.2

All sizes and capacities are available with either a smooth or tread deck.

## ORDERING OPTIONS

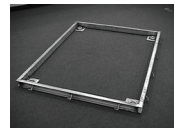
- S Smooth Platform Top
- T Tread Plate Platform Top

## HARDY LIFT DECK FLOOR SCALE ACCESSORIES

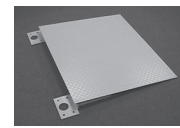
A complete line of

- Instrument Pedestals
- Ramps
- Pit Frames

enable you to easily configure a solution to meet your individual applications



Pit Frames  
HI FSLDPF Series



Access Ramps  
HI FSLDR Series



Instrument Pedestal  
HIFSI-48-SS

# HARDY

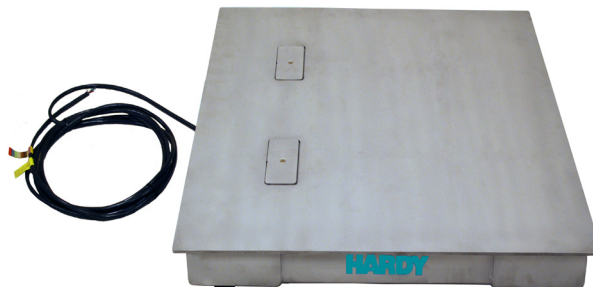
## PROCESS SOLUTIONS

Measurement • Automation • Productivity

### Hardy Process Solutions

9440 Carroll Park Dr.  
San Diego, CA 92121  
tel. +1-858-278-2900  
tel. 800-821-5831  
fax +1-858-278-6700  
www.hardysolutions.com  
hardyinfo@hardysolutions.com

ISO 9001:2008  
CERTIFIED  
Since 1993



All information within is subject to change without notice. Visit our website for latest specifications. WAVESSAVER, C2, IT, ADVANTAGE and ANY-WEIGH are registered trademarks of Hardy Process Solutions, Inc.. Allen-Bradley, CompactLogix, MicroLogix and Encompass are trademarks of Rockwell Automation, Inc. All other trademarks or registered trademarks are the property of their respective owners.

www.hardysolutions.com • 800.821.5831

HARLDFLR 0615  
0400-LDFS-01A